



314-647-6200
cs@carrlane.com
Carrlane.com

Carbon Fiber Layup Tools & Molding Solutions!

Carbon fiber layup tools are essential for producing lightweight, high-strength components with exceptional durability, thermal stability and corrosion resistance. These tools enable precise fiber placement and molding of complex shapes, making them ideal for aerospace, automotive, and marine applications. Carr Lane offers a robust lineup of components engineered to enhance these processes!

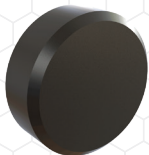


**Scan to browse our
Carbon Fiber Layup Tools &
Molding Solutions!**



Shoulder Potting Pins

Threaded for easy removal-
no pin lockups during curing



Round Carbide Pads

Heat-resistant seating in layup and
mold fixtures



Forged Swivel Hoist Rings

Secure lifting and rotation for
heavy molds



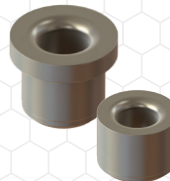
Thin Drill Stops

Precision control when drilling
carbon fiber layers



Quick Ship Press Fit Bushings (Carbide)

Reliable wear resistance in
production molds



ON-SIZE® Bushings for Bullet-Nose Dowels

Head Type & Headless
Perfect for repeatable, accurate
mold alignment